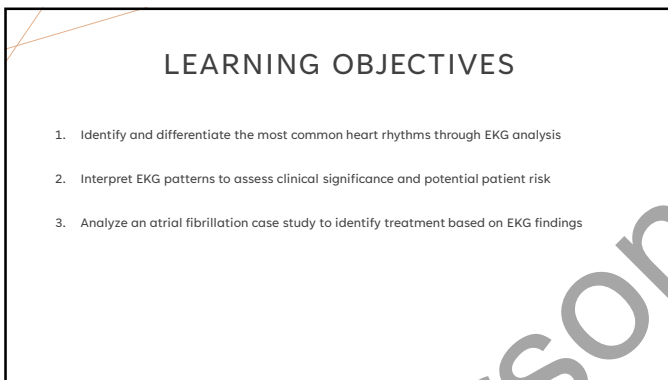
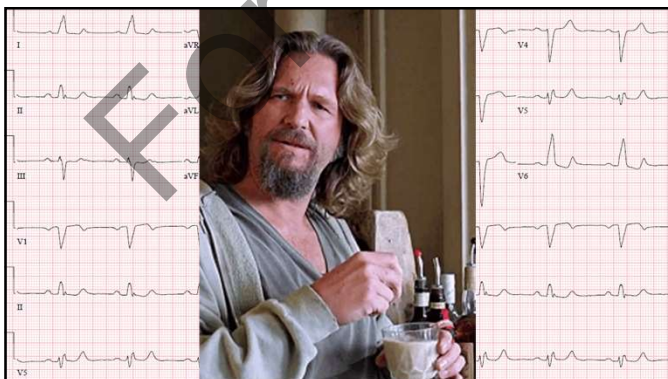




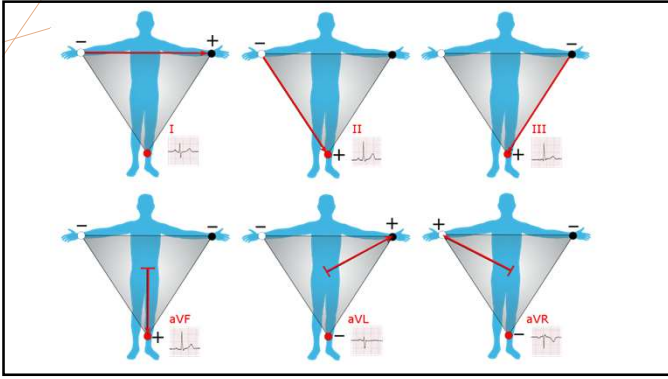
1



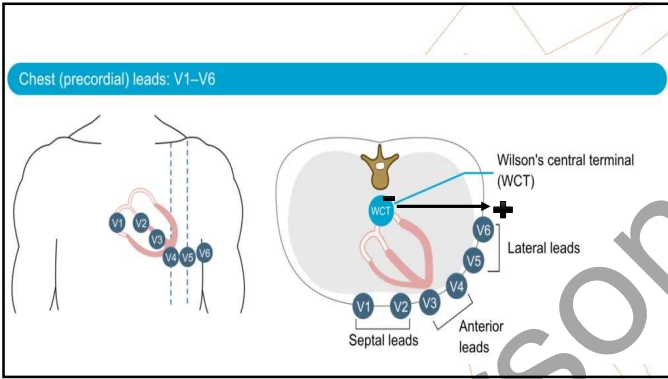
2



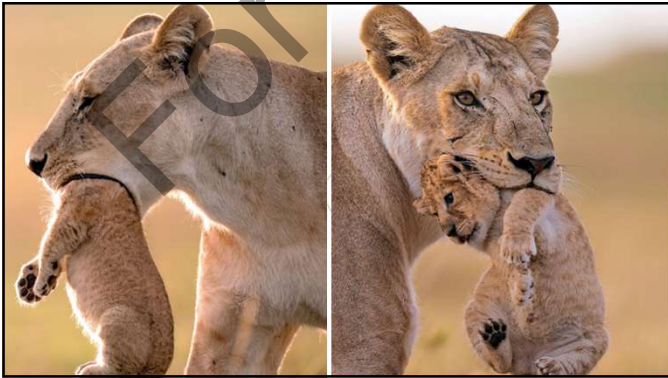
3



4



5



6

RHYTHM IDENTIFICATION

- Pick a lead
- Assess the Rate
- Is the rhythm regular or irregular?
- Are there discernable "P" waves
- P to QRS ratio
- Measure:
 - PR interval – any delays?
 - QRS duration – Bundle branch block?
 - QTC – normal, or prolonged?

7

Question 1: What rhythm does this ECG Show?

- A. Complete heart block
- B. Sinus rhythm
- C. Ventricular tachycardia
- D. Atrial fibrillation

8

Question 2: What rhythm does this ECG Show?

- A. Sinus arrhythmia
- B. Sinus brady with PAC's
- C. Atrial fibrillation
- D. Sinus with PVC's

9

- Quantify PAC's and evaluate for any structural heart disease
- Evaluate labs
- Is the patient symptomatic?
- Reassurance, lifestyle modifications
- Consider treatment

Result Text
 A total of 23 hours and 39 minutes analyzed.

1. The predominant rhythm is sinus with a first degree AV block. The rates ranged from 46 bpm to 89 bpm with an average heart rate of 67 bpm. No atrial fibrillation or atrial flutter seen.
2. There were no pauses or significant bradycardia.
3. A total of 948 VPCs were recorded comprising <1% of the total heartbeats. This included 7 couplets and 2 non-sustained runs of ventricular tachycardia with a maximum duration of 12 beats at the maximum rate of 134 bpm.
4. A total of 22,322 SVPCs were recorded comprising 23.41% of the total heart beats. This included 2534 couplets, 623 atrial runs and 82 non-sustained runs of supraventricular tachycardia with a maximum duration of 8 beats, and a maximum rate of 188 bpm.
5. There were no patient-triggered events.

10

Question 3: What rhythm does this ECG Show?

A. Sinus arrhythmia
 B. Sinus with PAC's
 C. Atrial fibrillation
 D. 2nd degree type I heart block

11

Question 4: What rhythm does this ECG Show?

A. Sinus arrhythmia
 B. 2nd degree type I AV block (Mobitz type I)
 C. 3rd degree AV block
 D. Atrial fibrillation

12

The Heart Block Poem

by the Princeton Surgical Group & [nurseslabs](#)

If the R is far from P, then you have a **FIRST DEGREE**.

Longer, longer, longer, drop! Then you have a **WENKEBACH**.

If some Ps don't get through, then you have **MOBITZ II**.

If Ps and Qs don't agree, then you have a **THIRD DEGREE**.

ECG strips illustrating various heart block conditions: First Degree AV block (P-R interval > 0.25 s), Wenckebach Block (Type I) (P-R interval progressively lengthening until a dropped QRS), Mobitz II block (Type II) (dropped QRS complexes without preceding P-R interval changes), and Complete Heart Block (Third Degree) (P waves and QRS complexes dissociated).

13

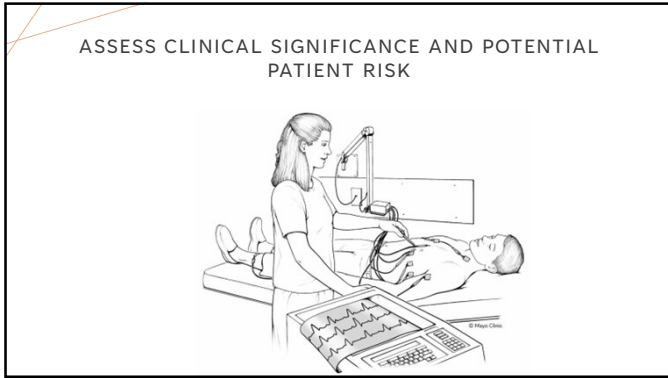
Question 5: What rhythm does this ECG Show?

A. VT
 B. Idioventricular rhythm
 C. AF with RV pacing
 D. AF with LV pacing

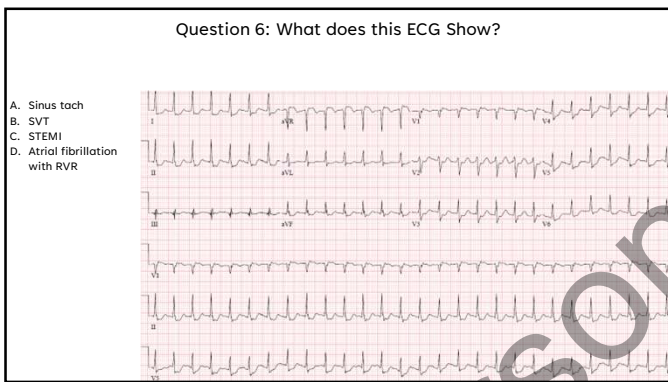
14

- Right Ventricle
- Right Atrium
- Left Ventricle
- Left Atrium
- Left Atrial Appendage

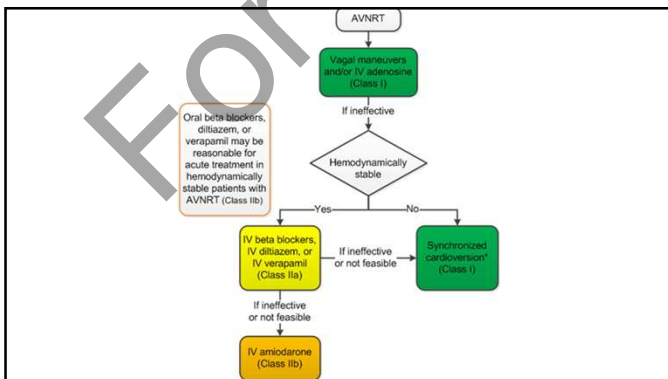
15



16



17



18

Question 7: What does this ECG Show?

- A. 3rd degree AV block
- B. Pericardial effusion
- C. STEMI
- D. Atrial fibrillation

19

I Lateral	aVR	V1 Septal	V4 Anterior
II Inferior	aVL Lateral	V2 Septal	V5 Lateral
III Inferior	aVF Inferior	V3 Anterior	V6 Lateral

20

Question 8: Based on this ECG, you are concerned for

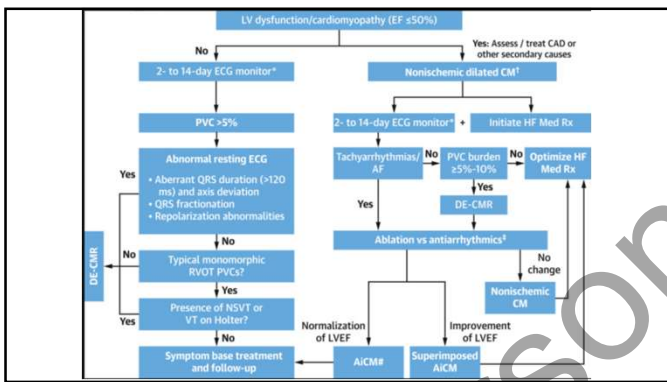
- A. No concern – its sinus brady
- B. Right bundle branch block
- C. 2:1 AV block
- D. 3rd degree AV block

21

Question 9: What does this ECG Show?

A. Sinus arrhythmia
 B. Frequent PAC'S
 C. Right bundle branch block
 D. Bigeminal PVC's

22

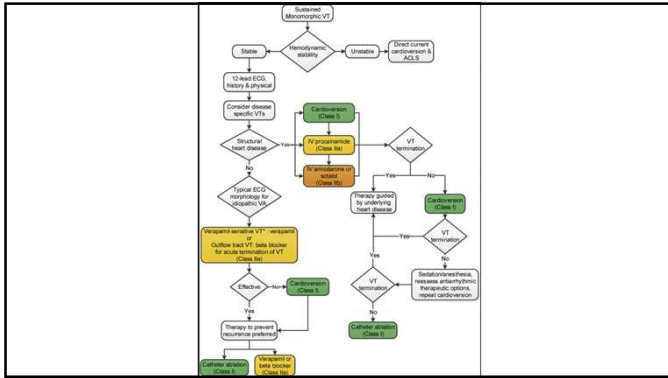


23

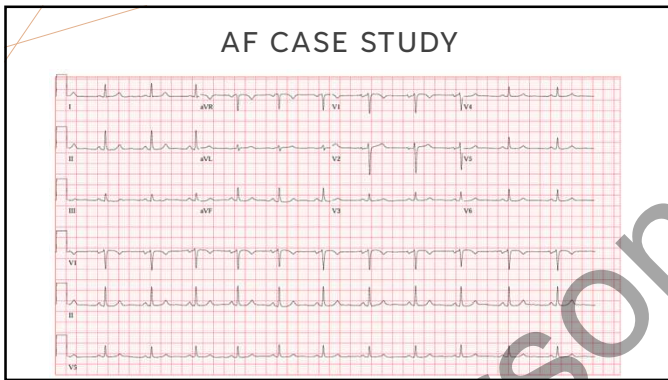
Question 10: What does this ECG Show?

A. SVT
 B. Left bundle branch block
 C. Atrial fibrillation with aberrancy
 D. VT

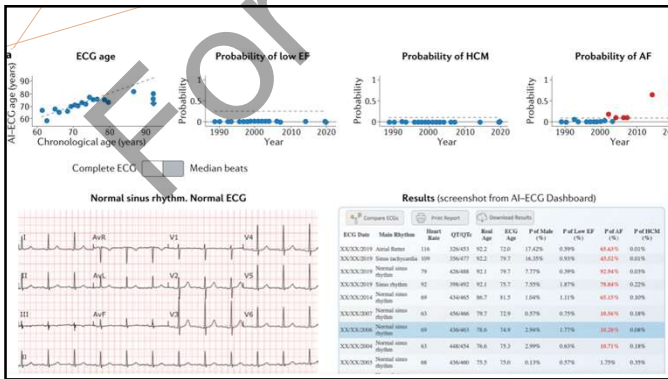
24



25



26



27

QUESTION 11: BASED ON THIS ECG, YOU SUGGEST?

A:
Ablation
B: DCCV
C: Antiarrhythmics
D: Rate control

31

- Because of the high success rate and low recurrence rate of typical AFL after CTI ablation, catheter ablation is often used as a first-line treatment.

32

CAVOTRICUSPID ISTHMUS (CTI) ABLATION

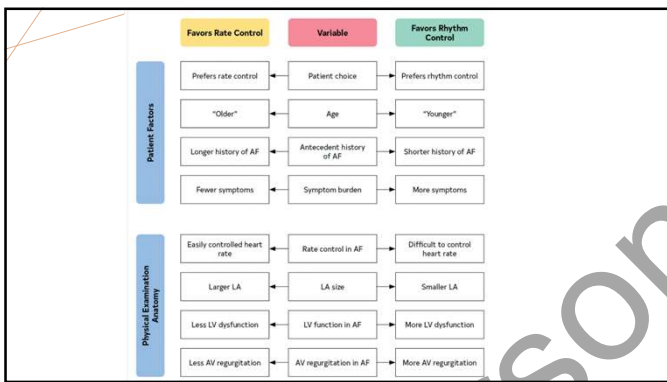
©2015 MAYO

33

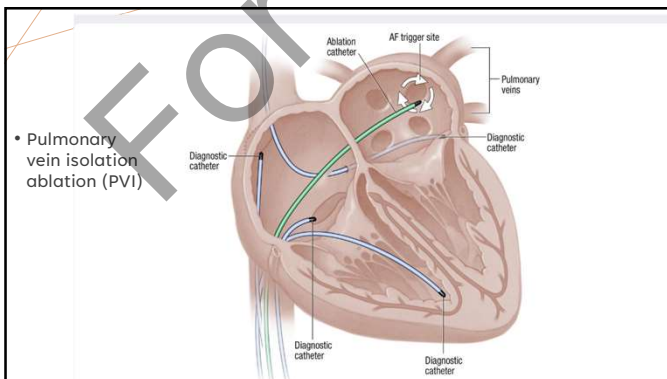
QUESTION 12: WHAT DOES THIS ECG SHOW?

- A: Sinus arrhythmia
- B: Atrial flutter
- C: Atrial fibrillation
- D: Sinus with baseline artifact

34



35



36

Question 13: What does this ECG Show?

- A. Left bundle branch block
- B. Atrial fibrillation with aberrancy
- C. Pericarditis
- D. 2:1 heart block

37

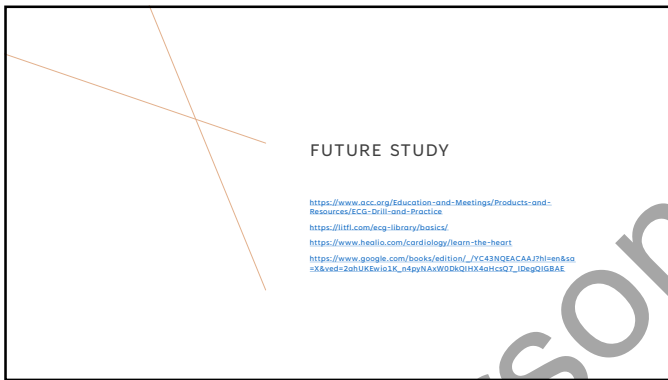
38

AF MANAGEMENT IS TRENCH WARFARE

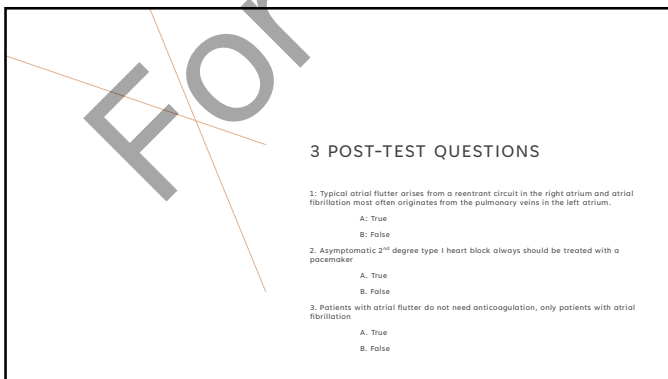
39



40



41



42
